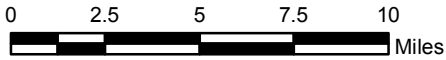


HOUGHTON COUNTY

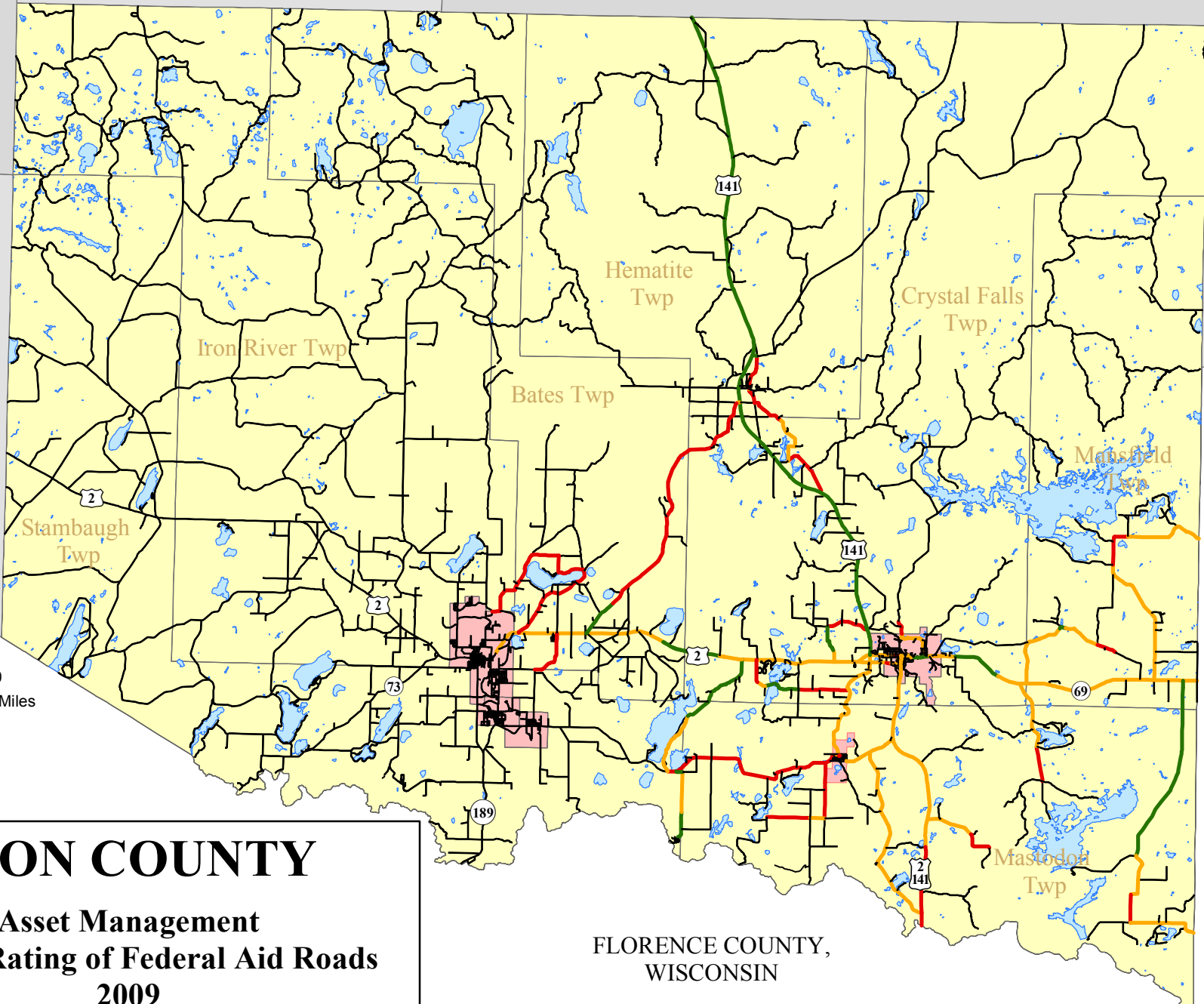
BARAGA COUNTY

Surface Condition (PASER Rating)

—	Structural Improvements (1 - 4) 49 miles, 30%
—	Capital Preventative Maintenance (5 - 7) 71 miles, 43%
—	Routine Maintenance (8 - 10) 44 miles, 27%



VILAS COUNTY,
WISCONSIN



FLORENCE COUNTY,
WISCONSIN



IRON COUNTY
Asset Management
Surface Rating of Federal Aid Roads
2009